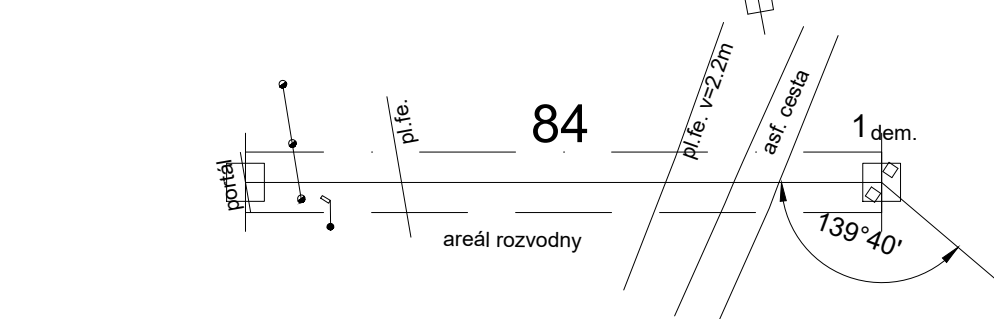
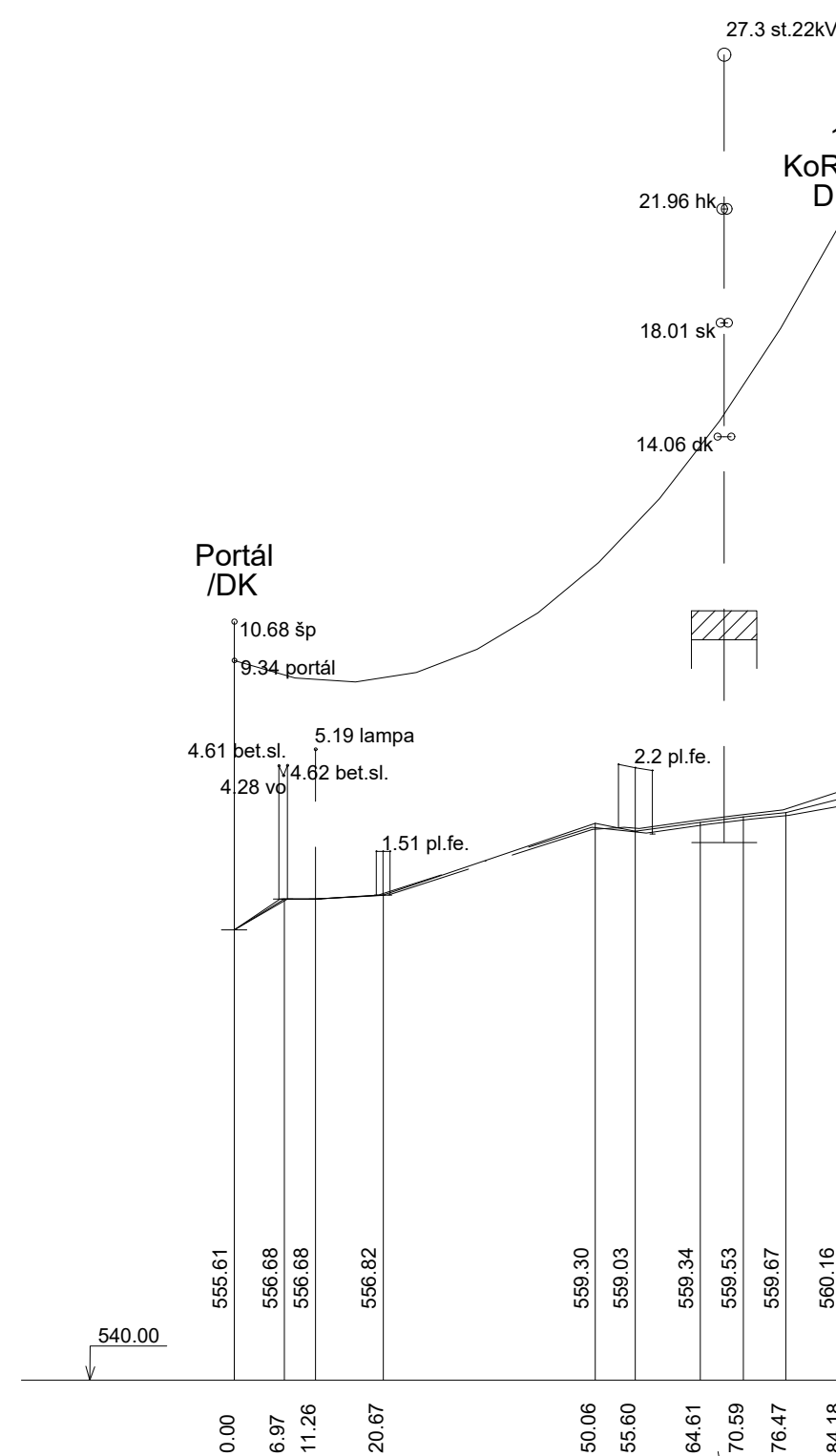
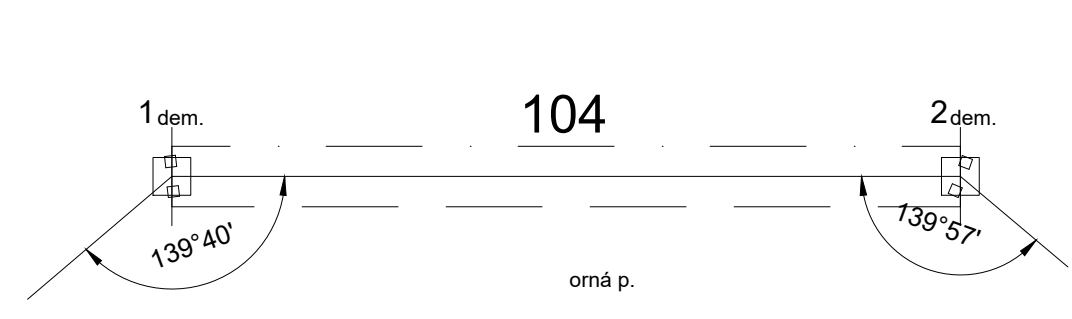
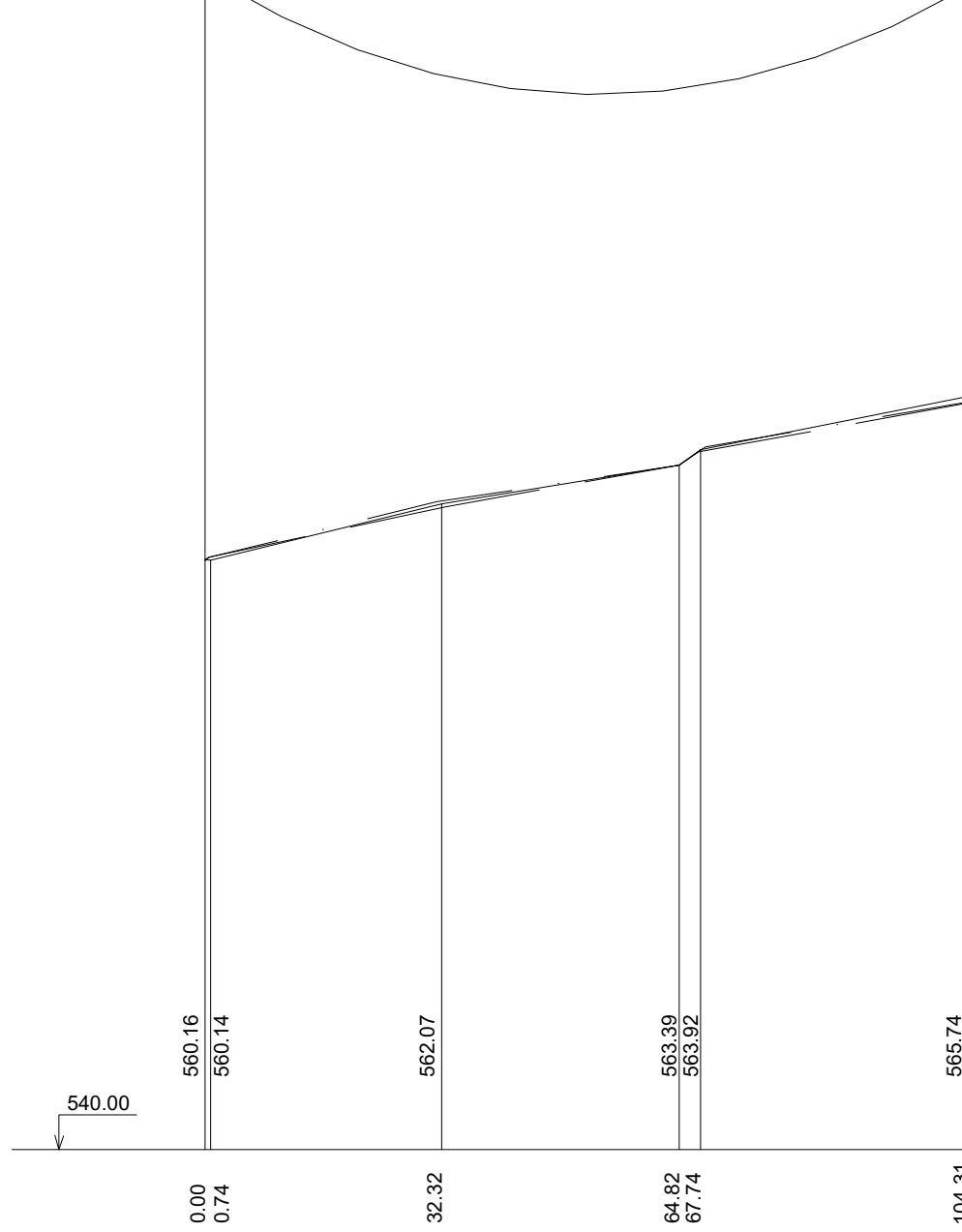


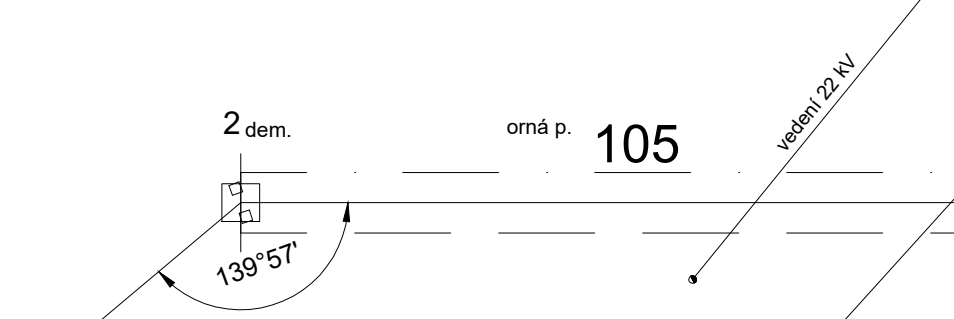
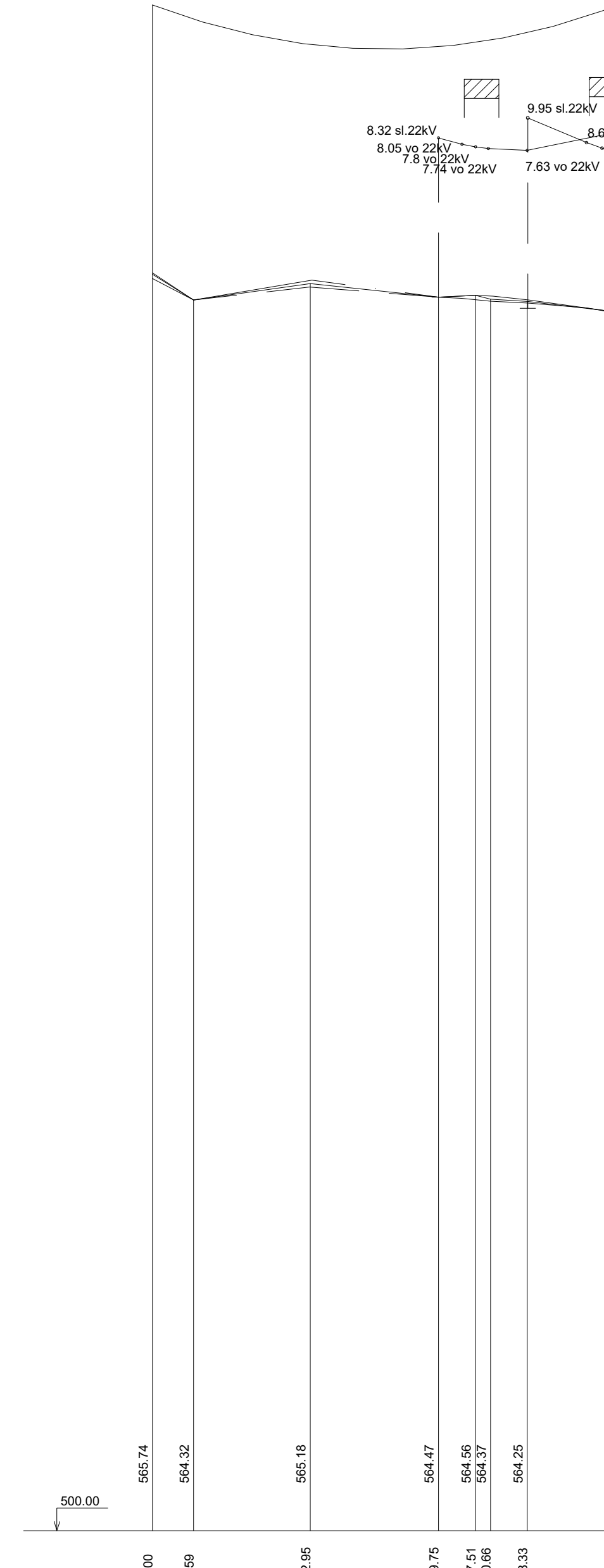
vodiče 1x3x243-AL1/39-ST1A - 5,5 MPa, I5,  $c_{70}$ = 152 m



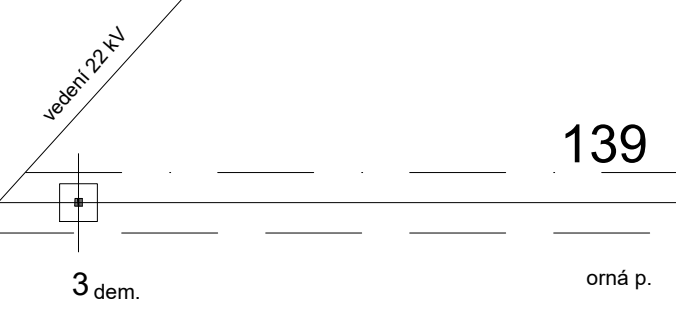
1 KoRV+6 /DK/ vodiče 1x3x243-AL1/39-ST1A - 15 MPa, I5,  $c_{70}$ = 350 m 2 RV /DK/



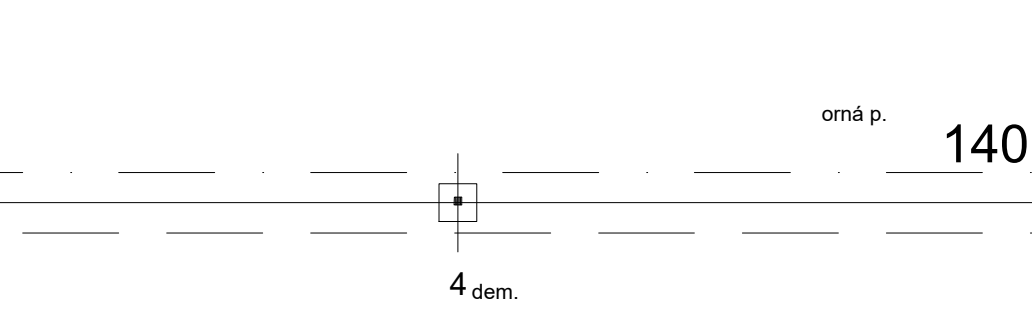
2 RV /DK/ vodiče 1x3x243-AL1/39-ST1A - 25 MPa, I5,  $c_{70}$ = 514 m 3 N+3 DN



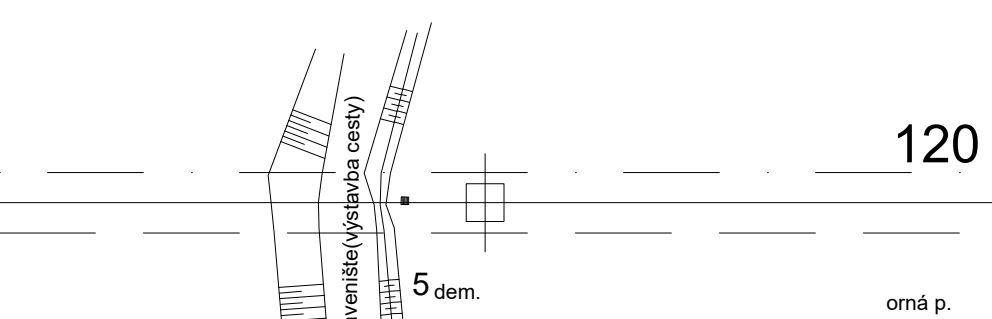
139



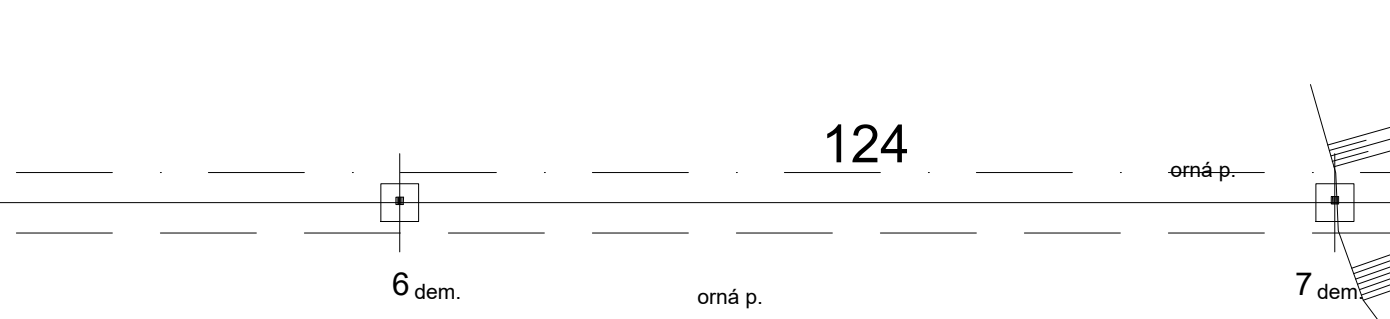
140

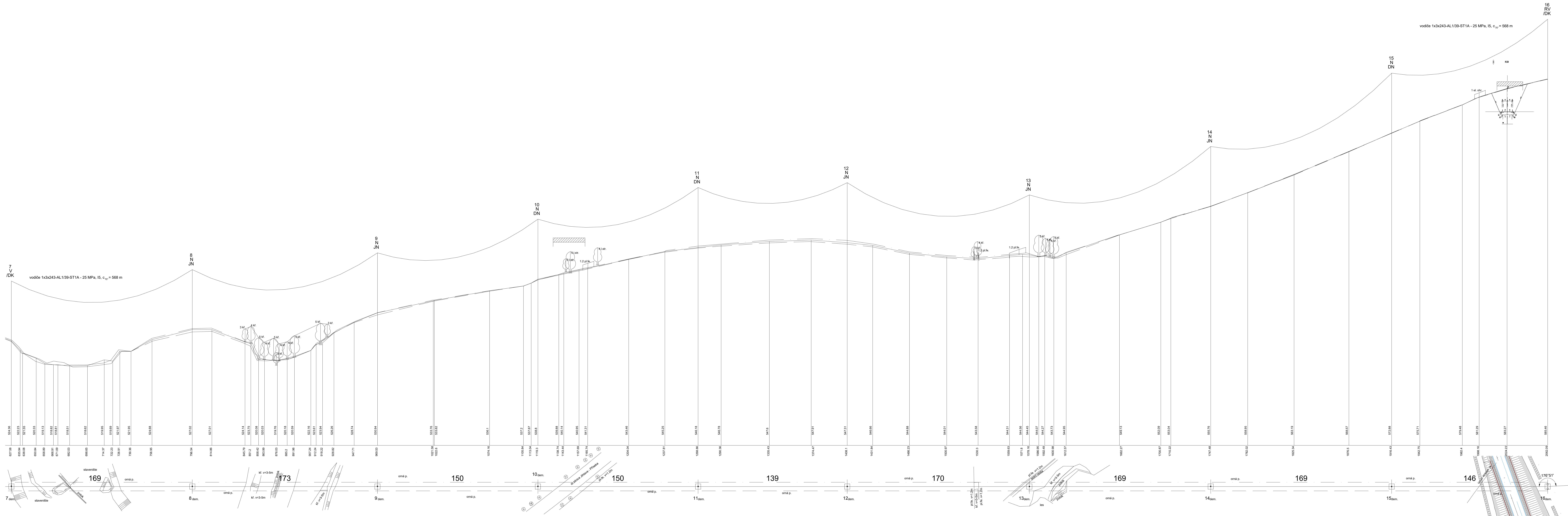


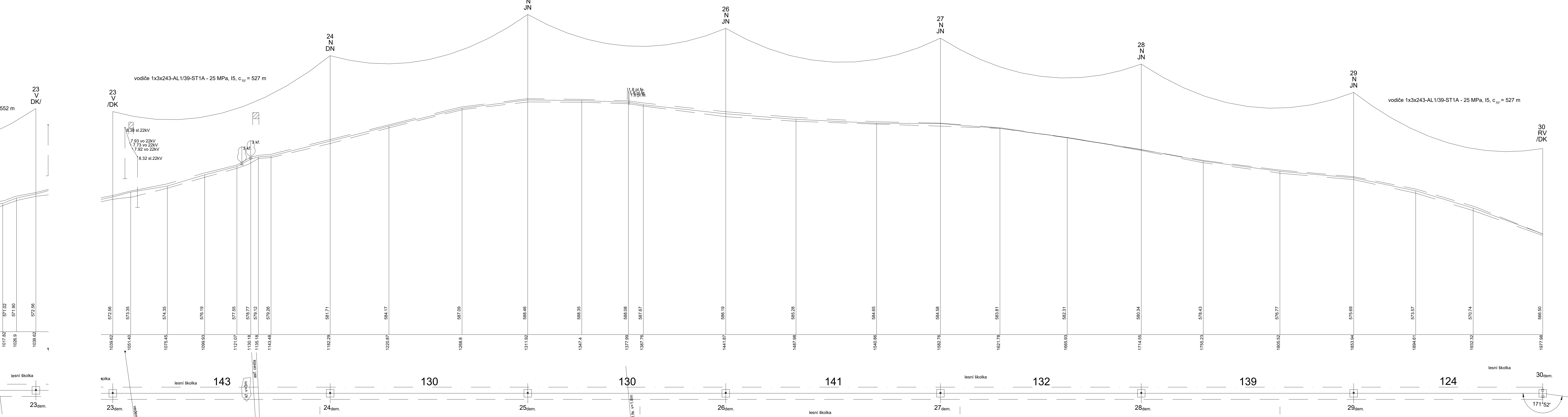
120

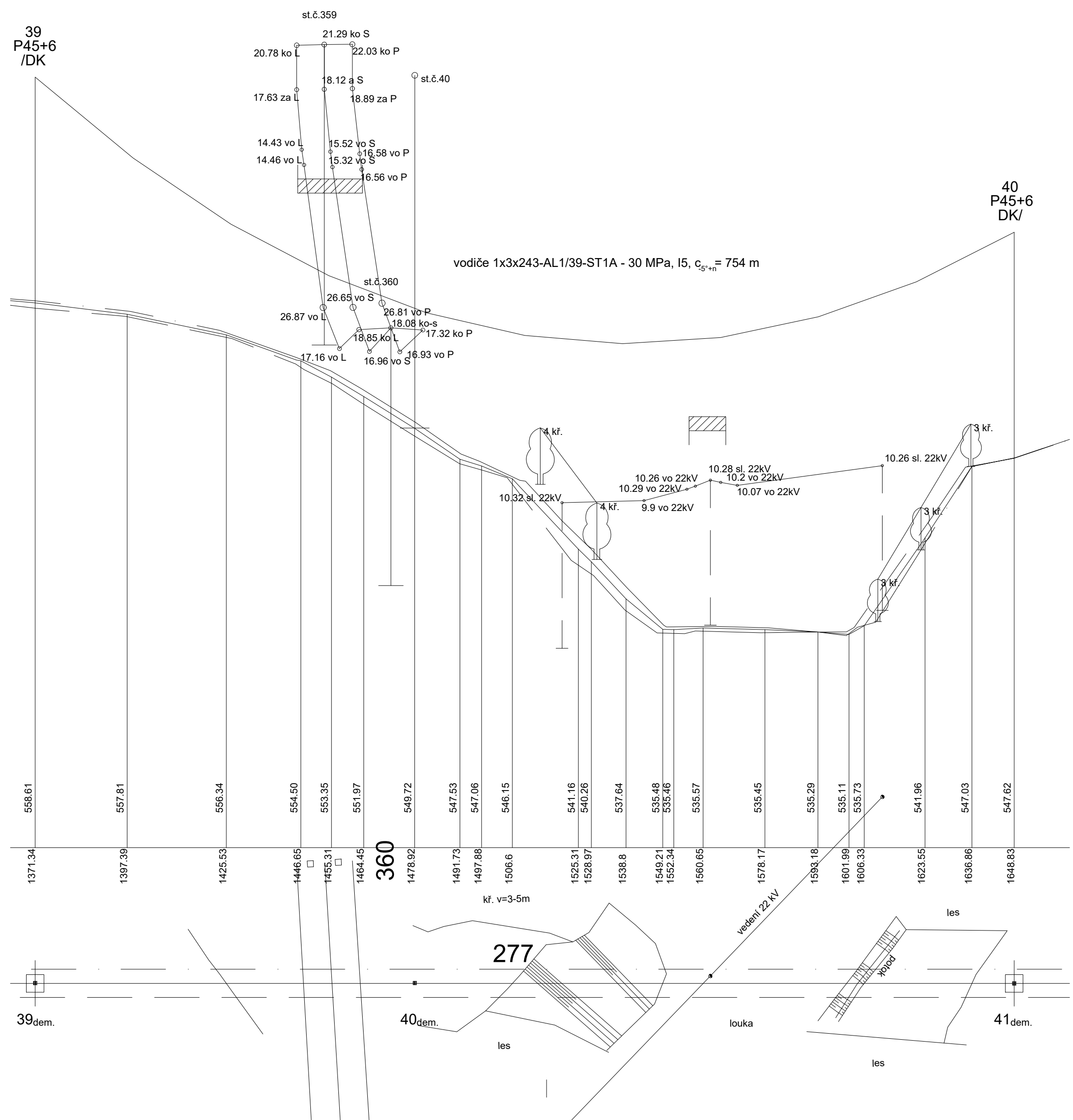


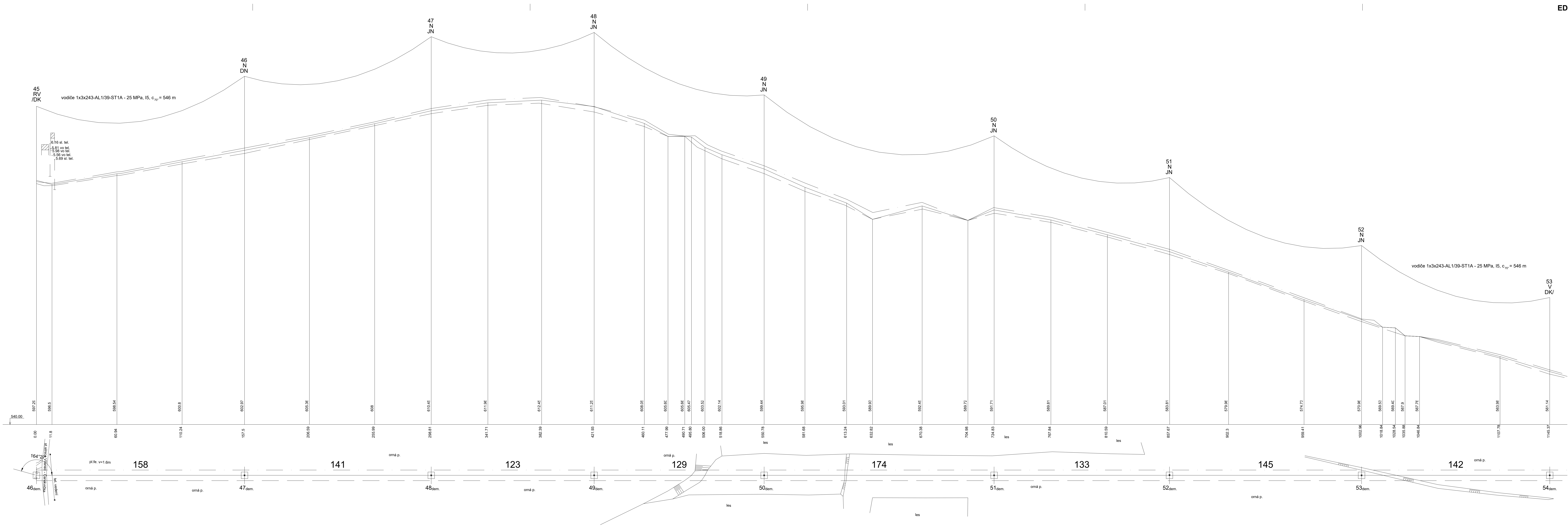
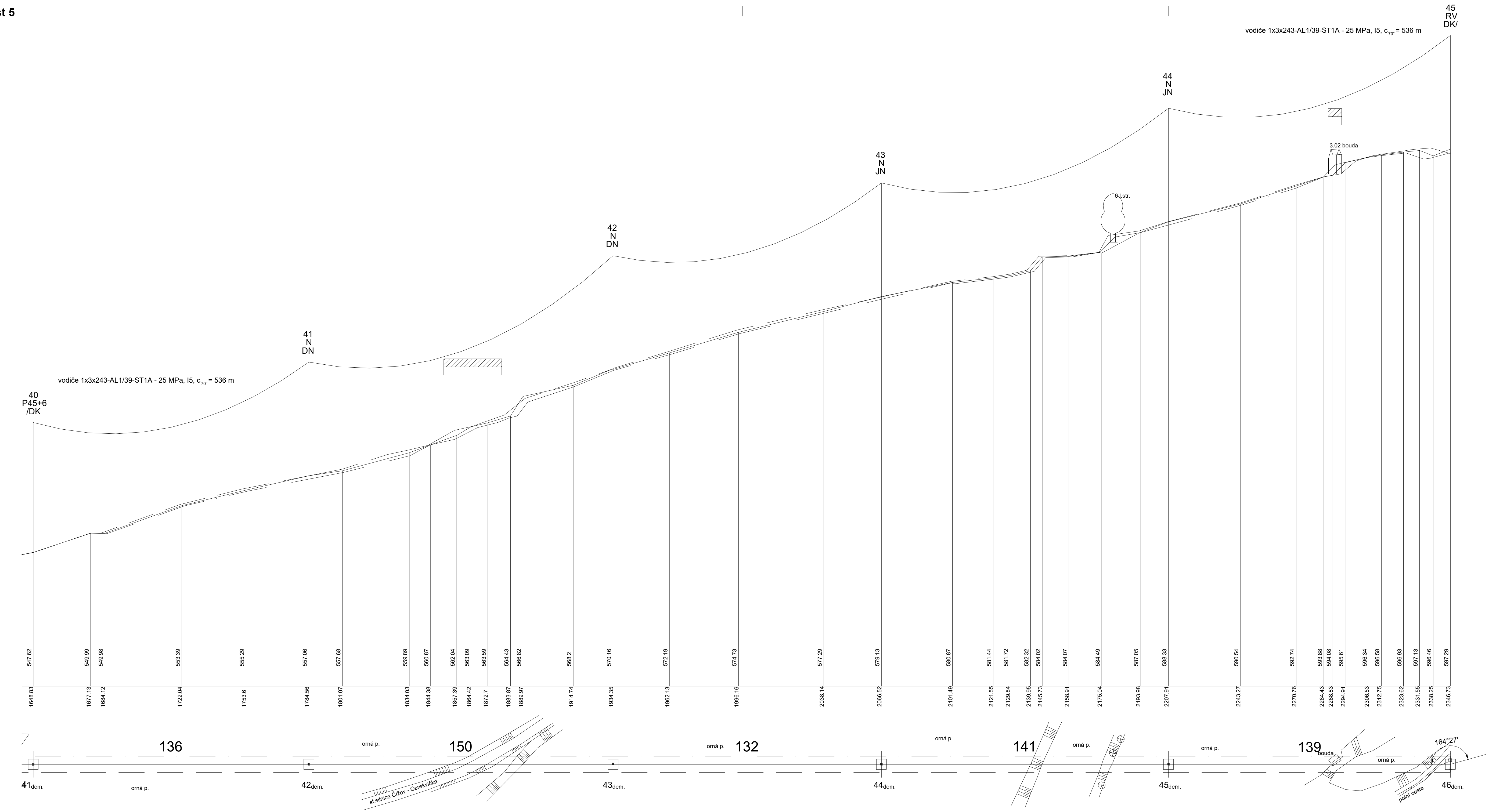
124

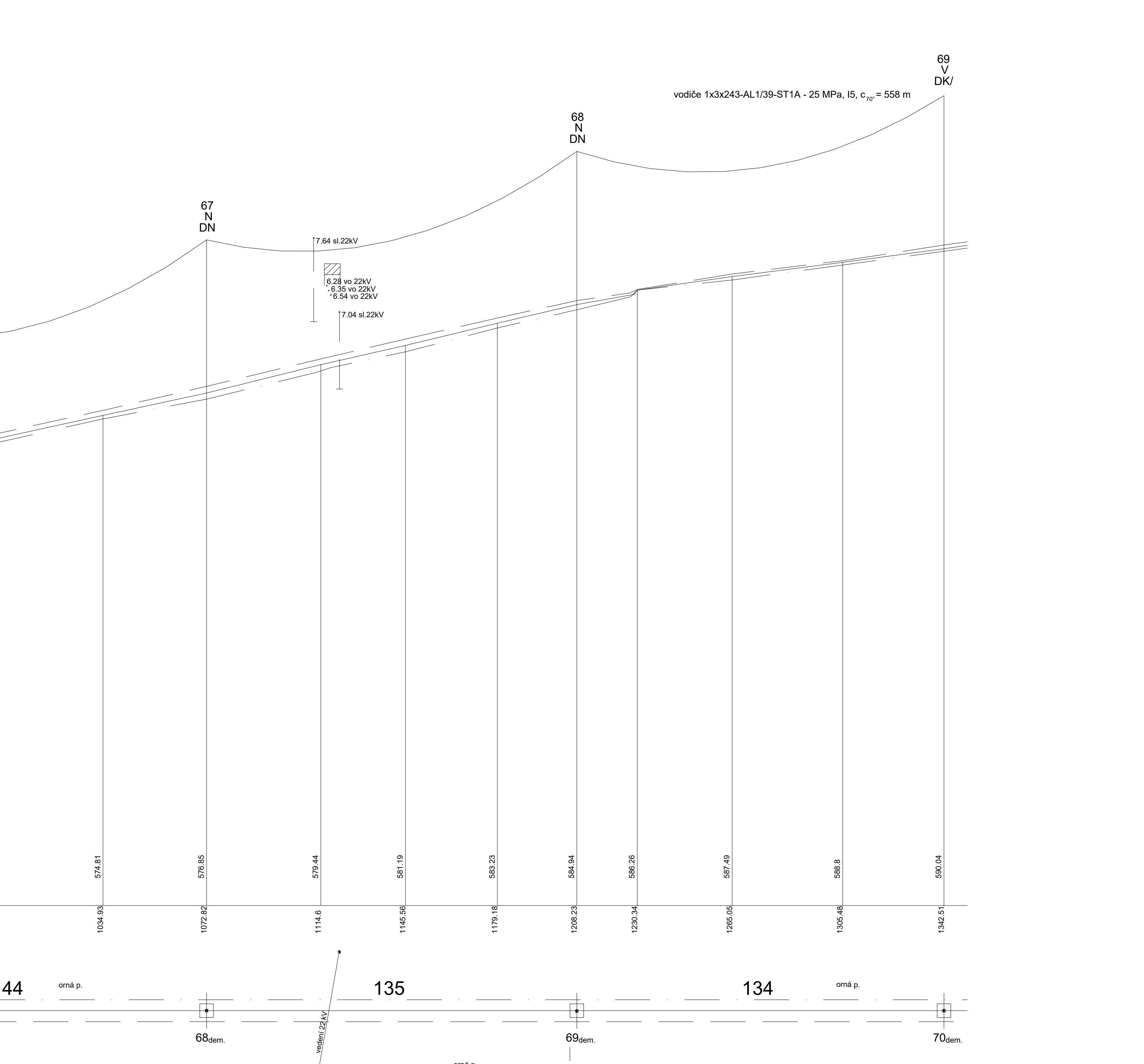
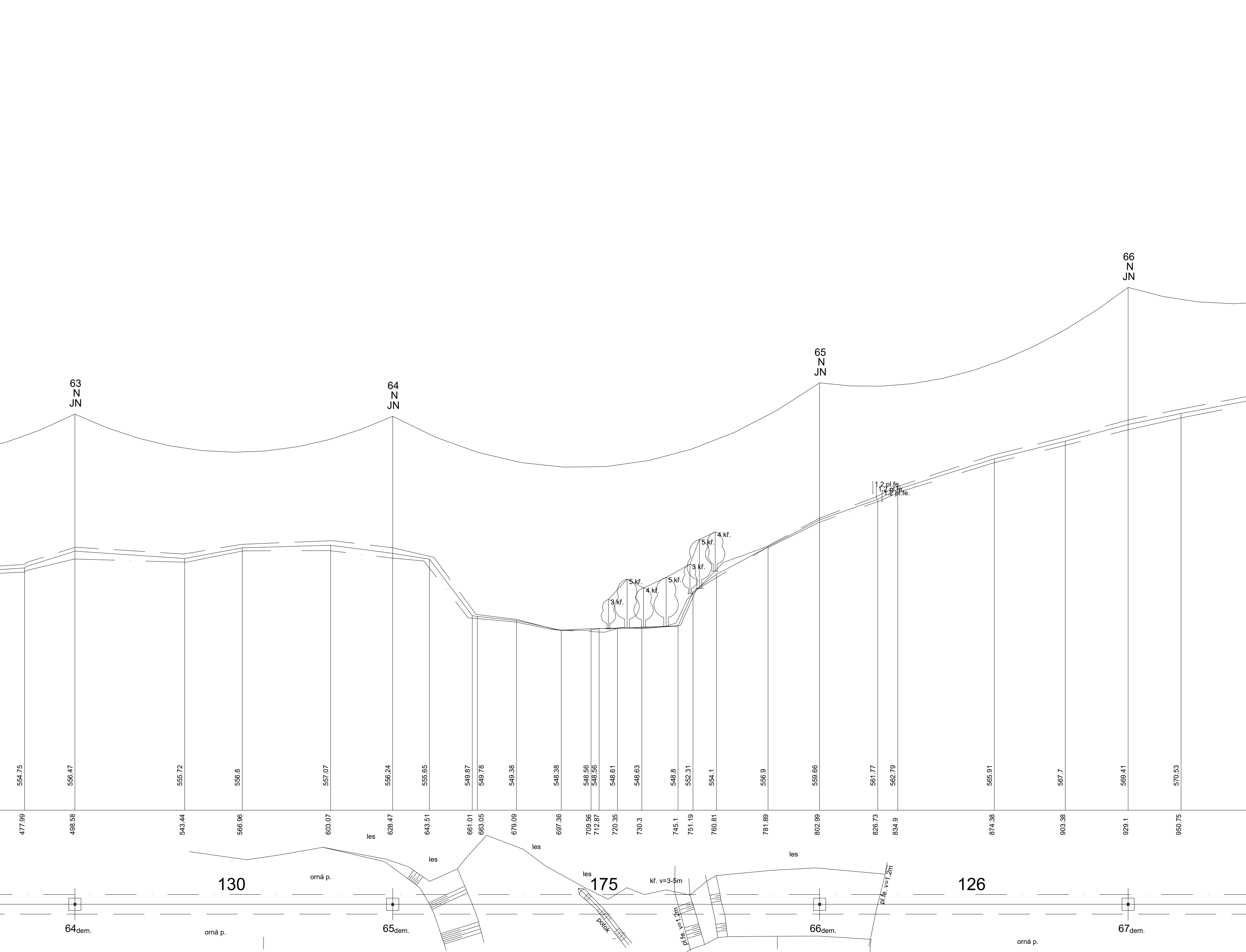
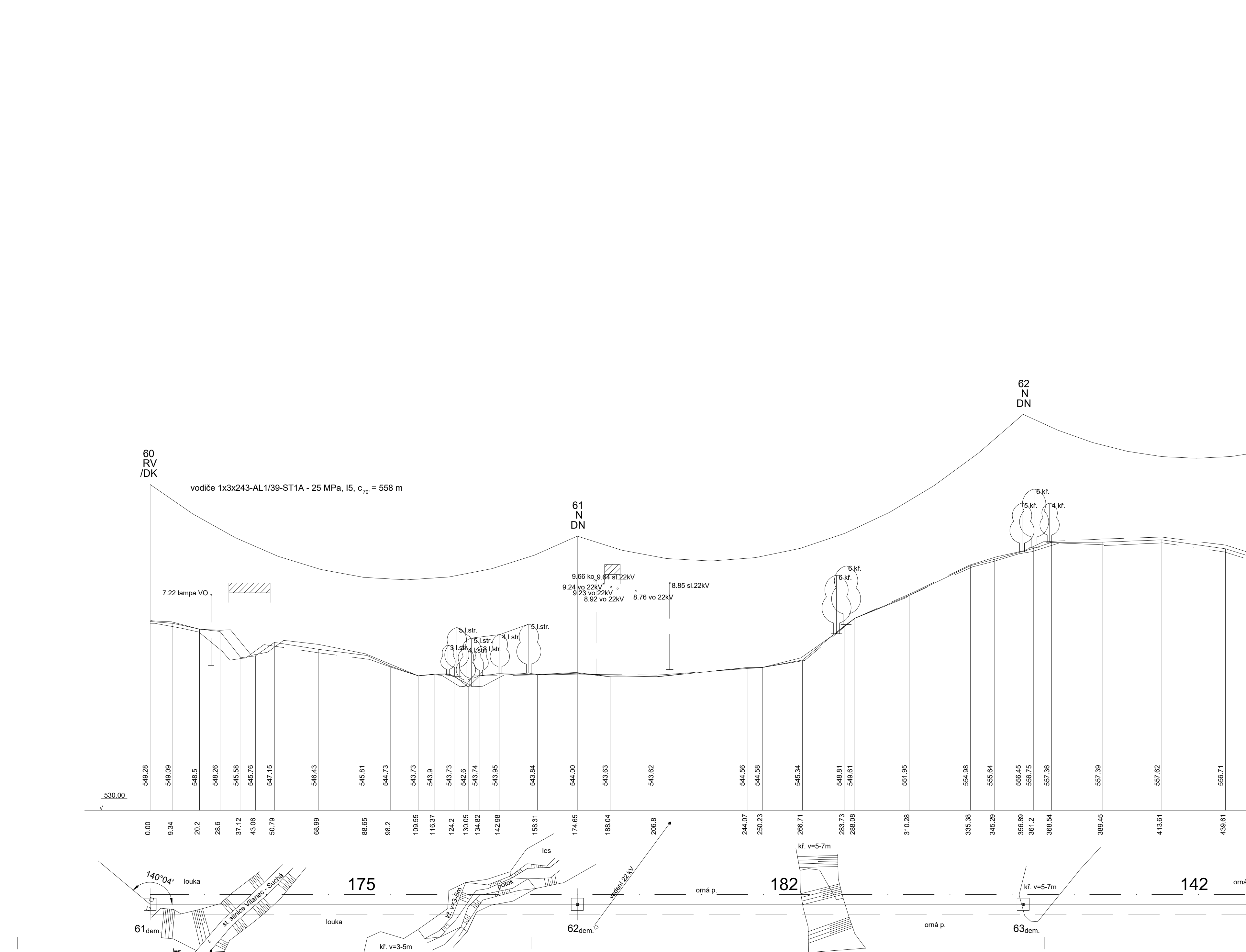
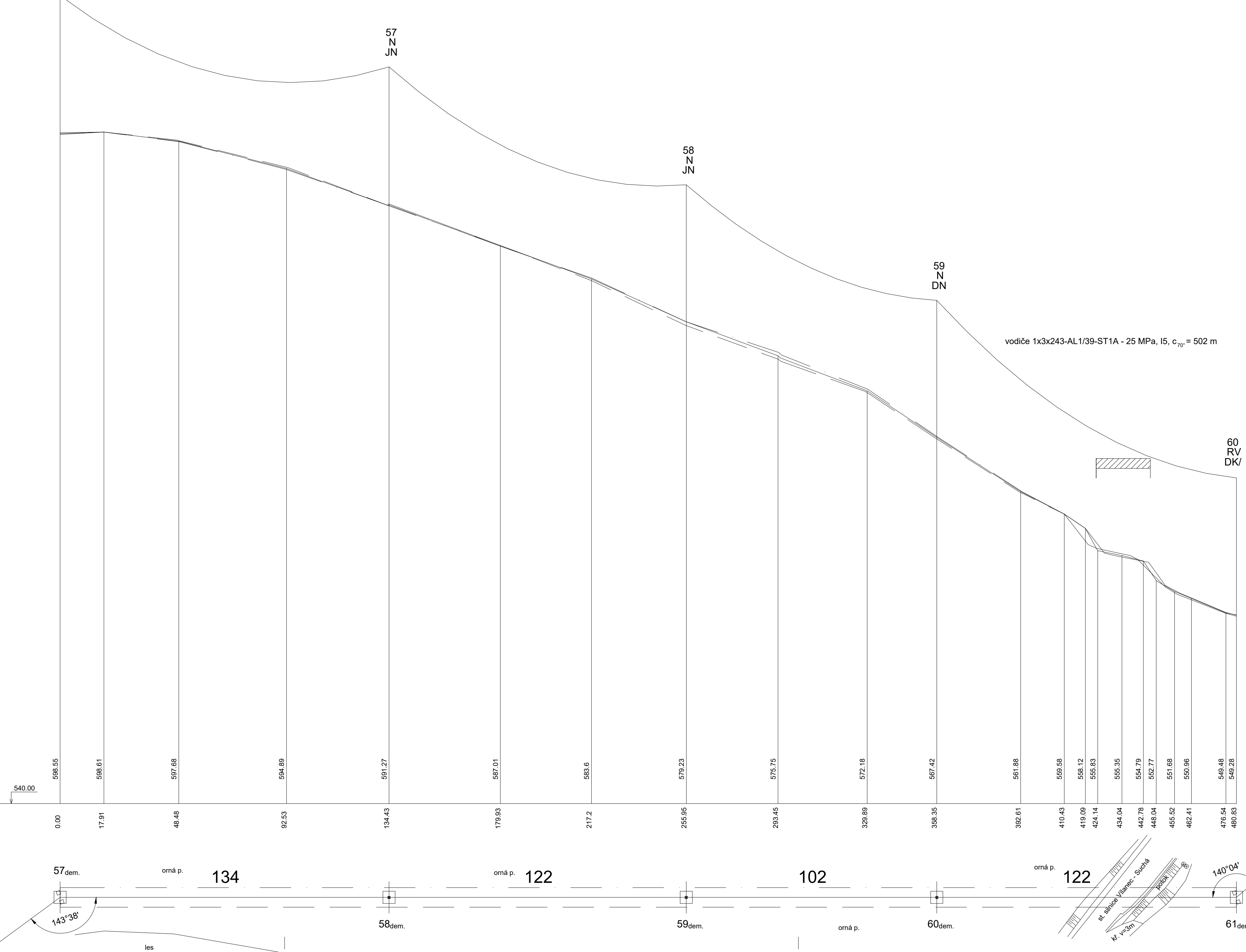
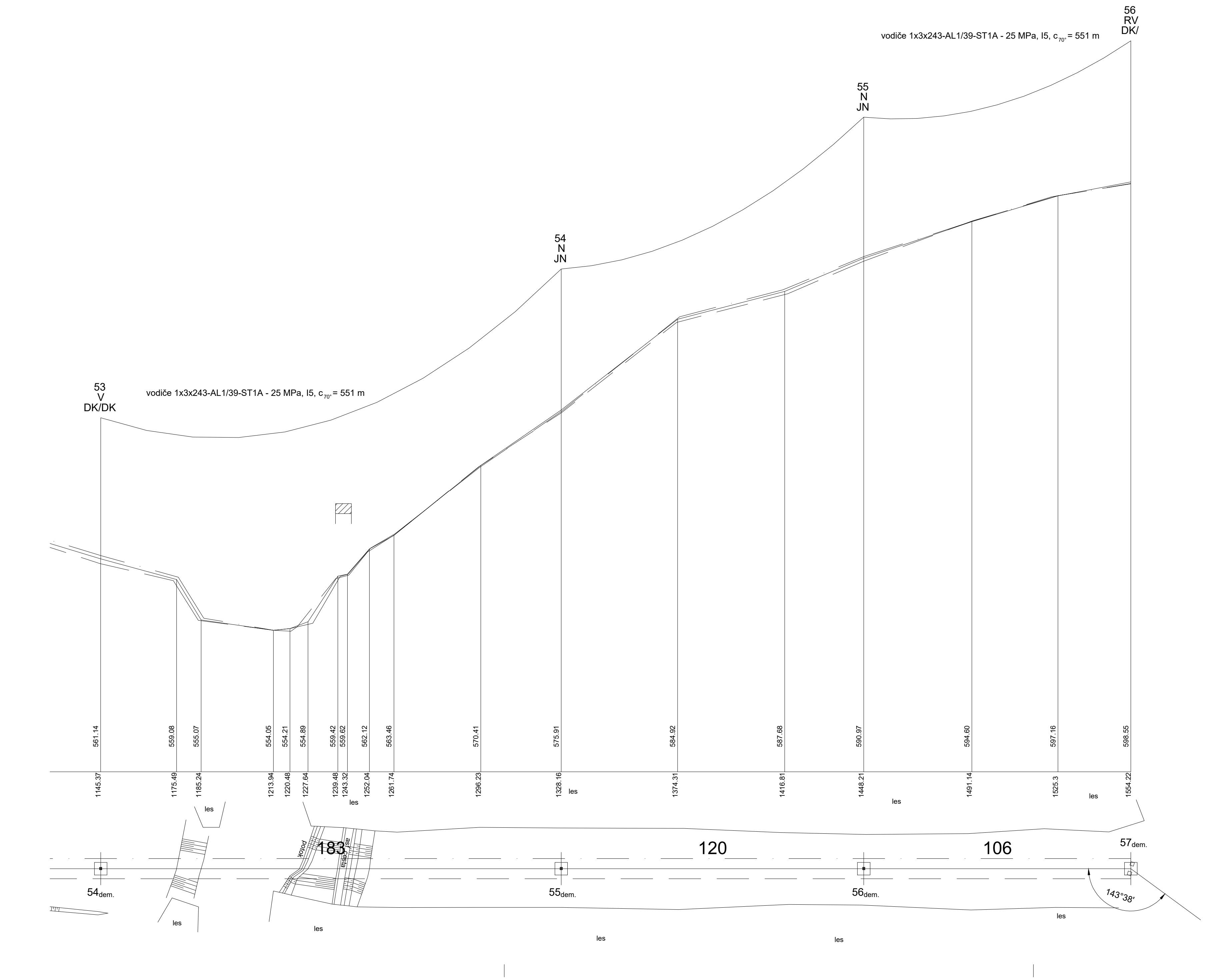




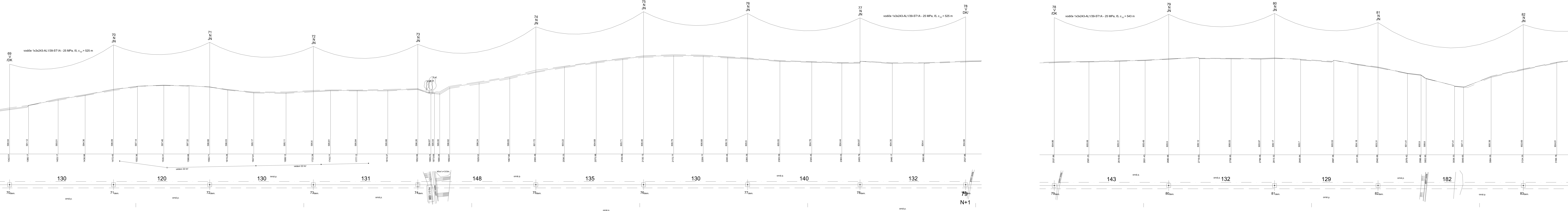












N+1

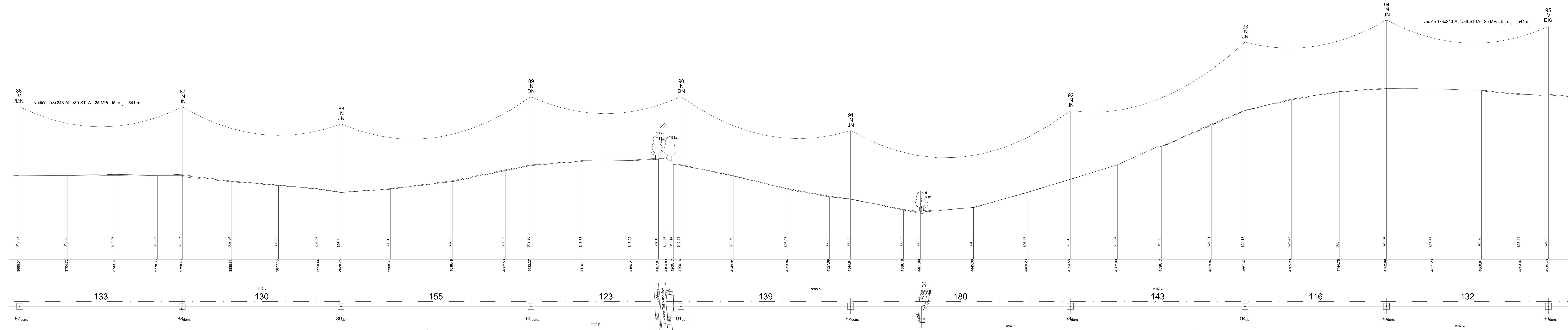
omá p.

omá p.

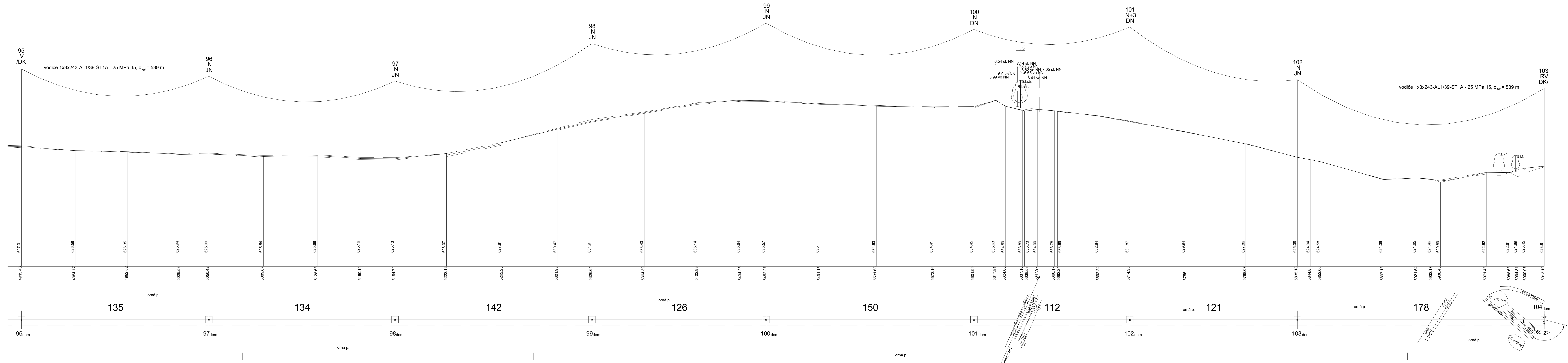
omá p.

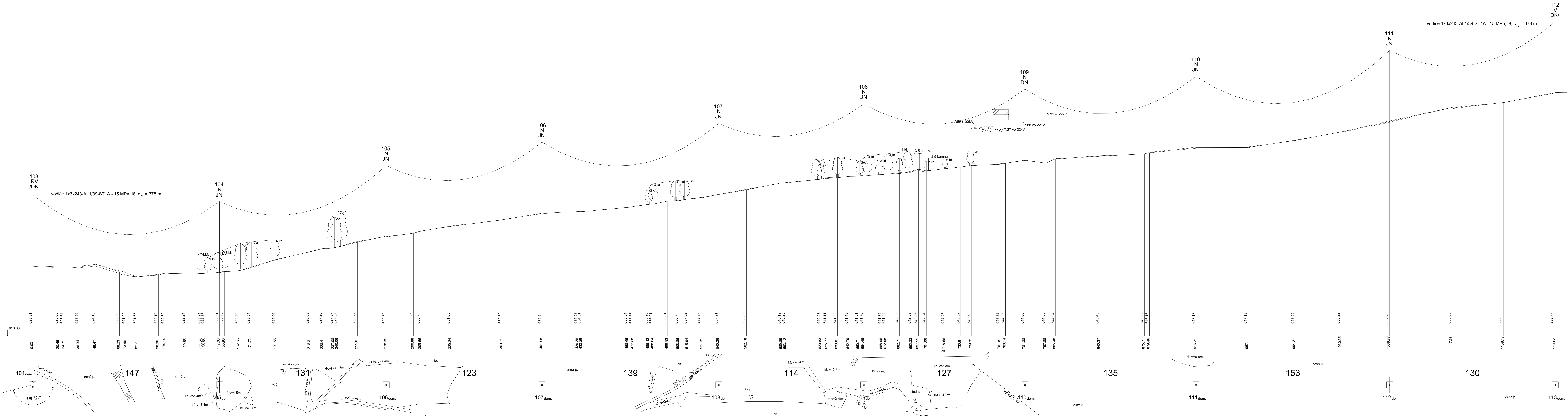
omá p.

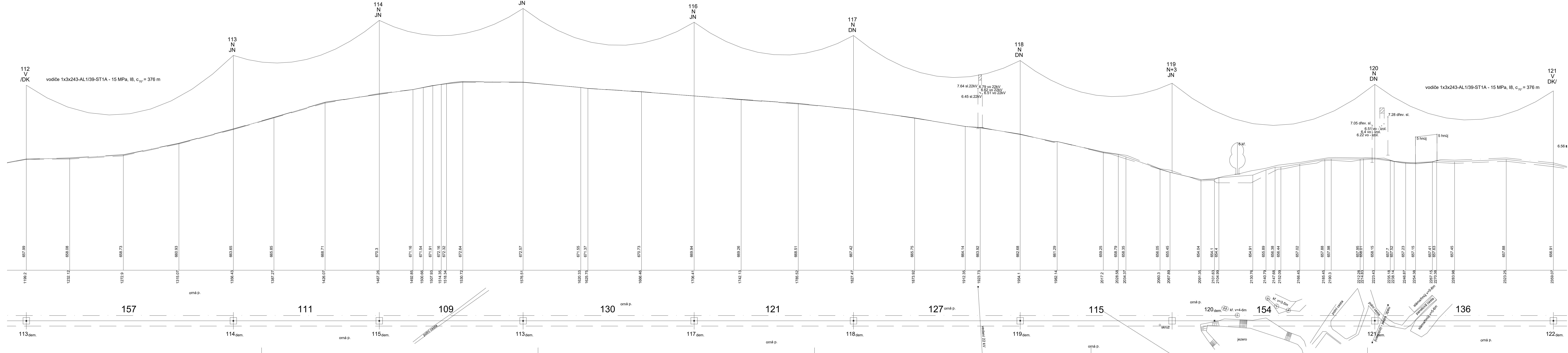
omá p.



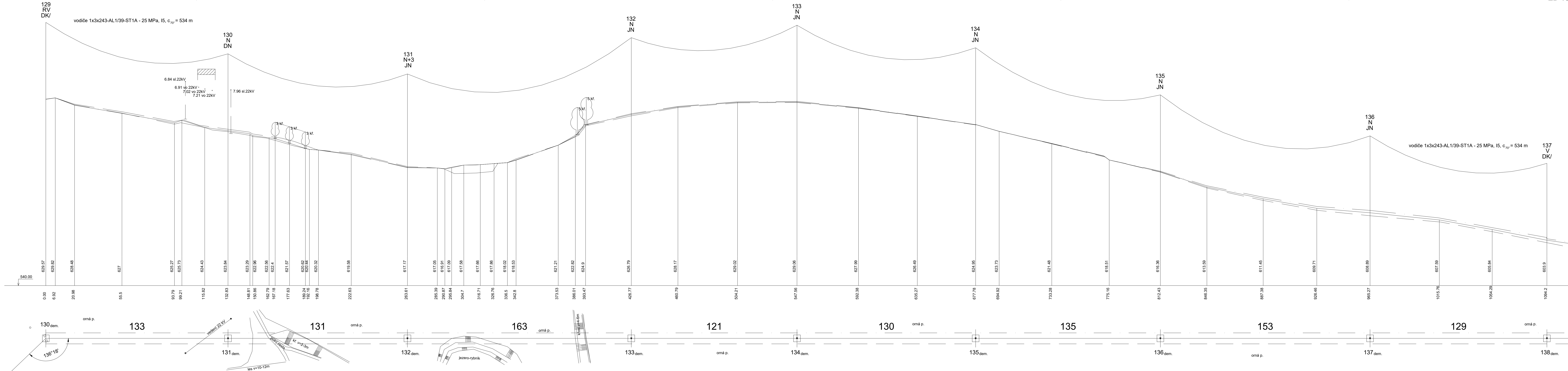






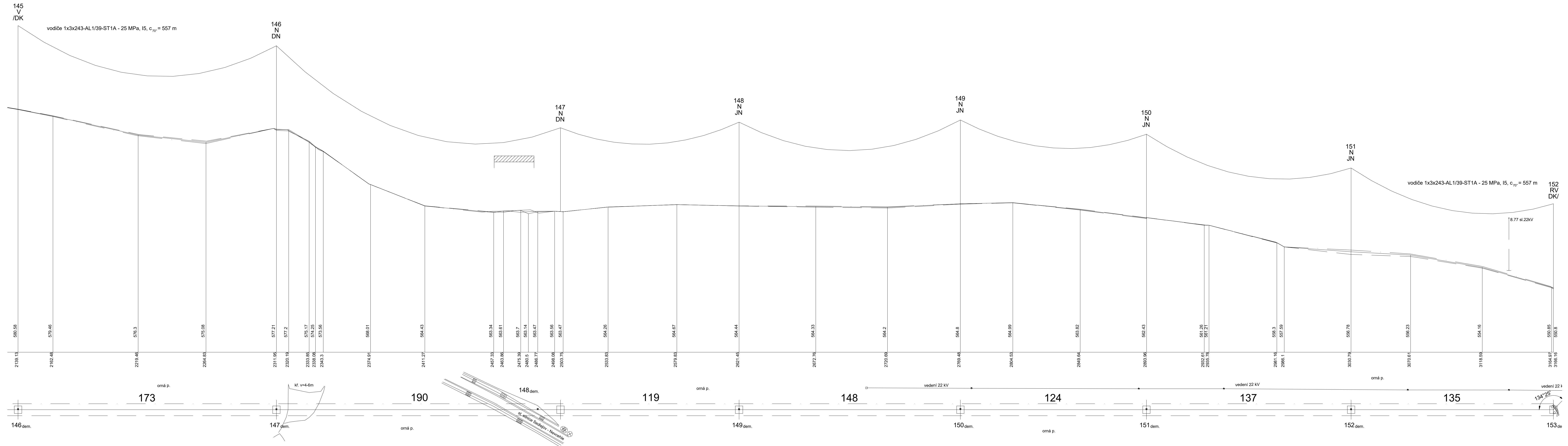


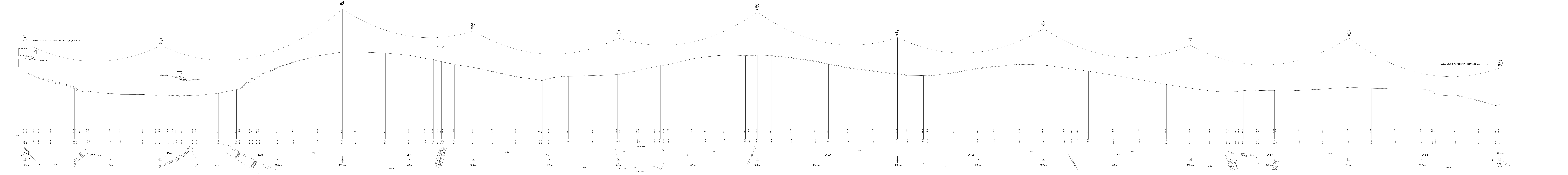


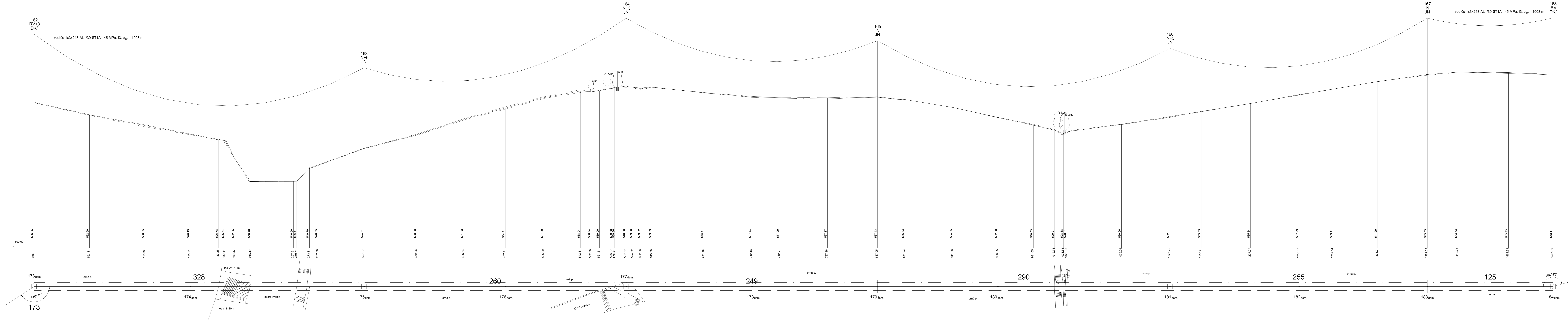


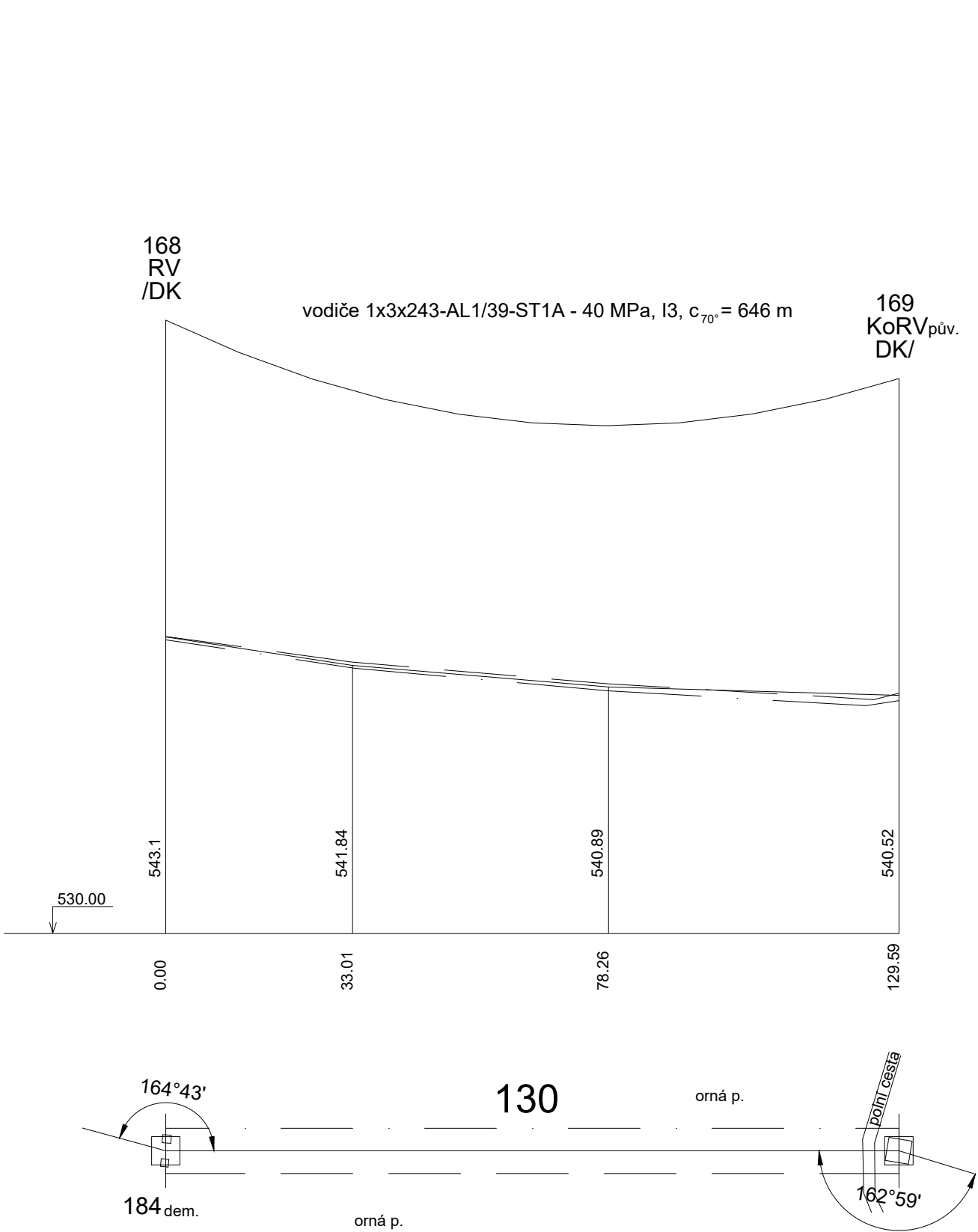




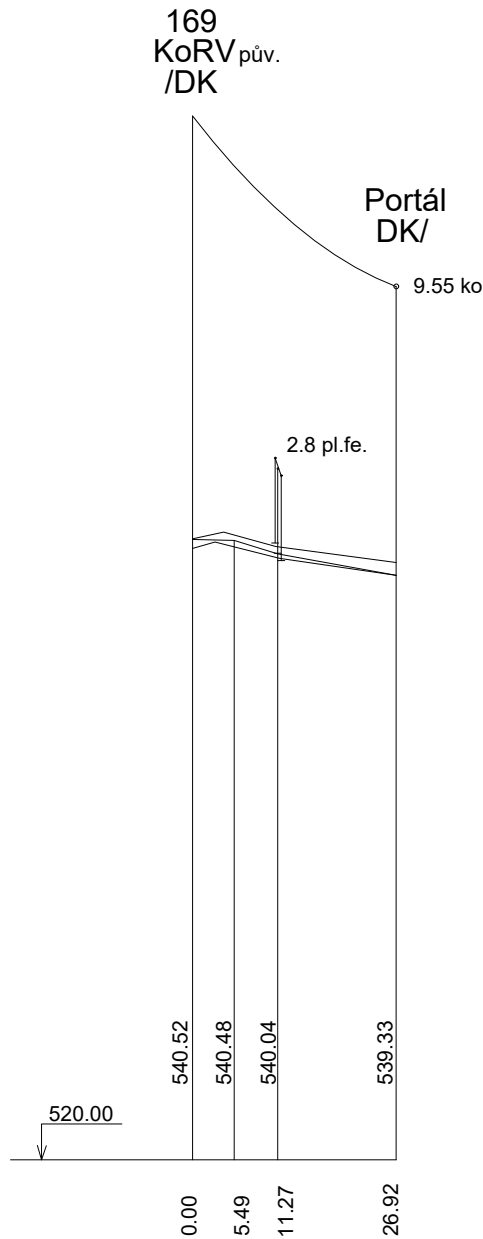



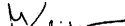






vodiče 1x3x243-AL1/39-ST1A - 7 MPa, I3, c<sub>70°</sub>= 120 m



Změna	c		Datum		Vykonal		 <b>EDIN</b> PROJEKTY ELEKTRICKÝCH VEDEŇ <b>BOHEMIA</b>
	b						
	a						
Zodpovědný projektant: Ing. Sersen			Vypracoval: Mgr. Pavelka		Schválil: Ing. Kubinec		 Okružní 876/19b, 638 00 Brno tel. 00420-723511252 e-mail: edwin-bohemia@volny.cz
<b>V520 - Výměna vedení</b>						Měřítka	1: 10 000
						Formát	16x44
						Datum	7/2018
						Účel	DPS
<b>Podélný profil</b>						Archivní číslo	
						<b>ED 18-5-1255</b>	
Tato dokumentace nebo její část nesmí být reprodukována nebo použita bez písemného povolení.							